

Features

- M260/M262 Printer Power Supply
- Directly Drives D183 Interface
- Same Fixing Holes and Size as D183 Interface
- Input Voltage Range AC
Version: 198VAC to 264VAC
or 99VAC to 132VAC
- Input Voltage Range DC
Version: 18VDC to 28VDC
- Output Voltage Regulated:
12VDC at 2.5A
5VDC at 0.75A
- PCB Contains Low Voltages Only
- Low Cost

Applications

- EPoS Terminals
- OEM Equipment
- Data Loggers
- Ticket Dispenser
- Mobile Applications
- Original Applications



Introduction

The D197 power supply has been specifically designed to power the M260/M262 range of printer mechanisms via the D183 Interface.

Installation is extremely easy as the flying cable from the D197 plugs directly to the D183 Interface. The D197 also has the same size and fixing holes as the D183 so it can be fitted directly above or below on pillars to minimise space.

The AC voltage range enables one power supply to be used for 110/120/220/240Vac sources.

The DC version is particularly suited for mobile applications.

Operation

The D197 power supply has a variable potentiometer to adjust the 12Vdc nominal voltage. This is factory set to 12.4Vdc. If AC voltages at the lower end of the permitted ranges are used it is suggested that the 12Vdc output is readjusted using the user's supply and with the D183 connected but not printing. Connect a meter across Test Pins TP1 and TP2 and adjust VR1 until 12.4Vdc is set.

A 220/240Vac version can be modified to a 110/120Vac version and vice versa by the user. Refer to Circuit Diagram Note1.

SPECIFICATION

Power Requirements: AC Version: 198 to 264Vac 50/60Hz
 or 99 to 132Vac 50/60Hz
 DC Version: 18 to 28 Vdc

Power Output: VP: 12Vdc nominal at 2.5A
 ± 0.3Vdc regulation
 VL: +5Vdc ±0.25Vdc at 0.75A

Temperature: Operating: 0°C to +50°C
 Storage: -20°C to +70°C

Relative Humidity: Operating: 5 to 80%
 Storage: 95% (at 40°C)max non condensing

Weight: 850grams

Physical Size: 138mm(W) x 100mm(D) x 43mm(H)

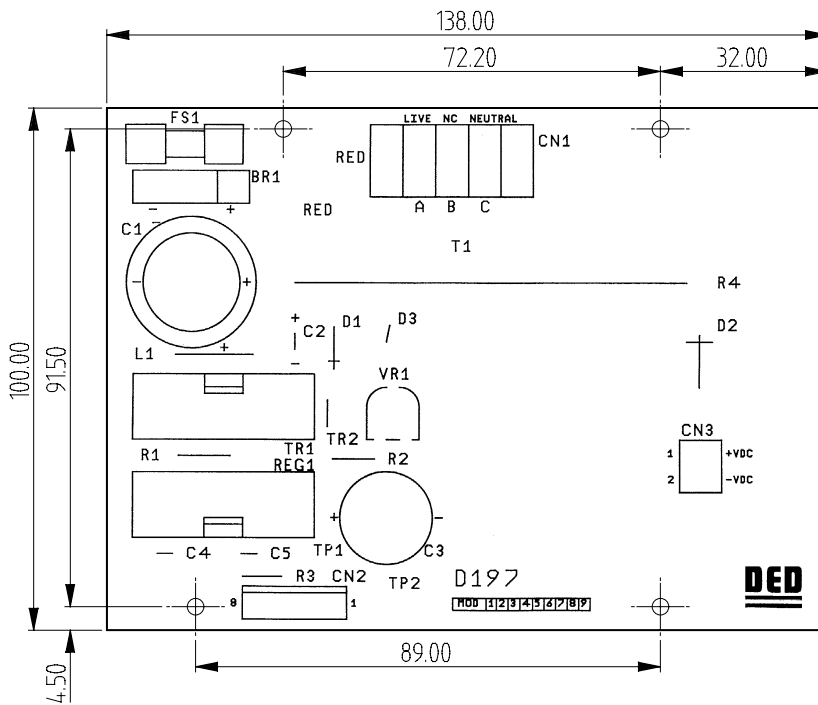
Connector: Input: AC/DC Screw Terminal Type
 Output: Flying Lead with Polarised Connector

Fuse: 2.5A Semi Delay

ORDER CODE

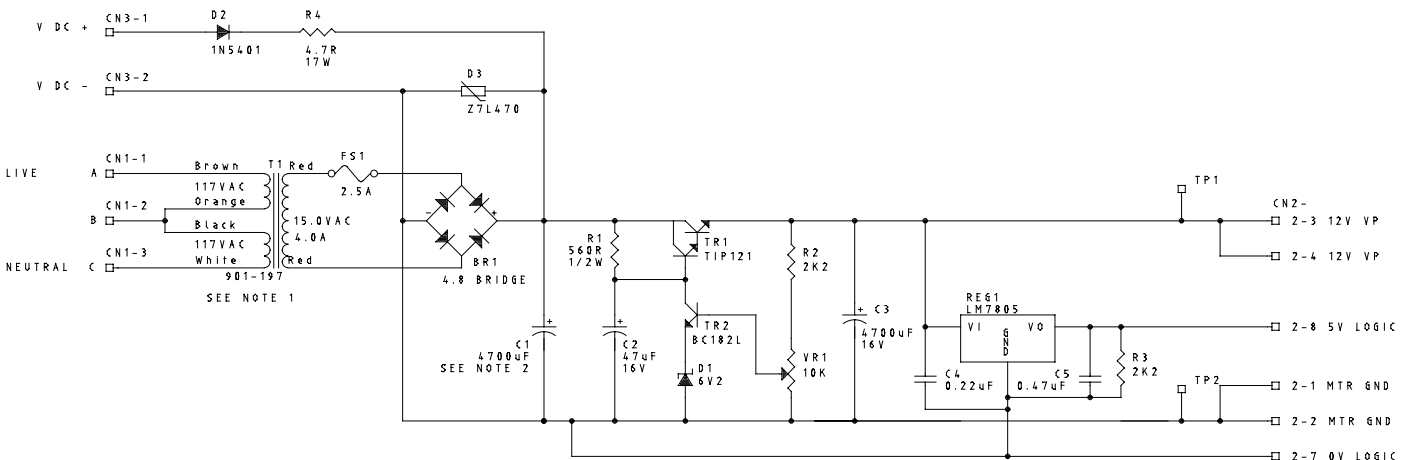
D197-01 220/240Vac Version
D197-02 110/120Vac Version
D197-03 18-28Vdc Version

PHYSICAL DIMENSIONS (mm)



4 Fixing holes 3.2mm Diameter
 Flying cable to CN2 is 105mm Long

CIRCUIT DIAGRAM



Note1: Shown connected for 220/240Vac input for 110/120Vac connect
 Black & Brown to CN1-A and Orange & White to CN1-C
 Note2: CN3, D2, D3 and R4 are only fitted in DC Versions
 Note3: CN1, Transformer, FS1 and BR1 are only fitted in AC Versions

Publication No D82-A

Specifications are subject to change without notice



Technology for the New Century

DED Limited Mill Road Lydd Kent TN29 9EJ
Tel: 01797 320636 Fax: 01797 320273 20273
e-mail: sales@ded.uk website: http://www.ded.co.uk